



Elmbridge

Borough Council

... bridging the communities ...



Shout!



Holiday Activities

Summer 2018

elmbridge.gov.uk/shout

Welcome to

Shout!

2018

Book online from
Tuesday 12 June
2018 for summer
holidays at
elmbridge.gov.uk/shout

Shout! holiday scheme offers a diverse and fun-packed programme of activities for 5 to 13-year-old children.

Please note online bookings close at 8.30am the working day before the course opens unless specifically stated.

Summer 2018 weeks we are operating:

Week 1 - Monday 23 July to Friday 27 July 2018

Week 2 - Monday 30 July to Friday 3 August 2018

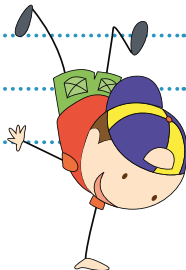
Week 3 - Monday 6 August to Friday 10 August 2018

Week 4 - Monday 13 August to Friday 17 August 2018

Week 5 - Monday 20 August to Friday 24 August 2018

Week 6 - Tuesday 28 August to Friday 31 August 2018

(Shout! is not open Bank Holiday Monday 27 August)



Take advantage of discounted prices on Shout! Apply for a more card for your child at elmbridge.gov.uk/more. If your child has a more card, it must be valid before making a booking.

We offer concession places on the Sports and Arts Camp and at Ready Set Shout! with a valid concession **more** card.

How Shout! works this summer

New for 2018!

- All courses are bookable by the day
- 10% discount on Sports and Arts Camp at Bell Farm and Ready Set Shout! at Xcel if you book the full week course. This does not apply to the concession price
- Early Start at Ready Steady Shout! and Play Days at Xcel venue
- Shout! Extra!



Sports and Arts Camp at Bell Farm - 23 July to 17 August

Daily sports and arts camp where you can improve your sports skills and get creative all in the same day. This camp can be booked by the day or by the week to be eligible for the 10% discount (does not apply to the concession price). Please select the **full week course** when booking online. Children are split into age groups, 5 to 8's and 9 to 13's for specific activities. See pages **6, 7 and 8** for details (**Weeks 1 to 4**)



Ready Set Shout! at Xcel - 23 July to 17 August

Daily sports course with a great opportunity to try lots of different sports and fun active sessions throughout the holiday and to get involved in team challenges. This camp can be booked by the day or by the week to be eligible for the 10% discount (does not apply to the concession price). Please select the **Full week course** when booking online. Children are split into age groups, 5 to 8's and 9 to 13's for coach-led sessions. See pages **10** for details. **(Weeks 1 to 4)**

Early start at Ready Set Shout! - 23 July to 17 August

Early start from 8am to 8.30am. This is an additional booking please select as an additional course when booking online. This is bookable by the day. **(Weeks 1 to 4)**

Shout! Extra! New for summer 2018 - 23 July to 17 August

Activities that have been added to the daily programme but need to be booked separately. Children not booked on the full day can join these activities. Please note Shout! Extra must be booked in advance and incurs an additional fee. Please check the age ranges for eligibility. **(Weeks 1 to 4)**



Sports courses and activity days (part day) - 6 to 10 August and 13 to 17 August

If you like to try new things and enjoy new experiences have a go at **kayaking** (weeks 3 & 4) and outdoors fun at **Walton Firs Activity Centre** (week 3). See pages 11 for details. **Coached tennis** sessions can be found at elmbridge.gov.uk/parkstennis. See pages 17 for details.



Play Days at Xcel - 20 to 24 August and 28 to 31 August

Fun-filled days of sports and arts, a great end to the summer holidays. Bookable by the day. See page 12 for details. **(Weeks 5 and 6)**

Early start at Play Days - 20 to 24 August and 28 to 31 August

Early start from 8am to 8.30am. This is an additional booking please select as an additional course when booking online. This is bookable by the day. **(Weeks 5 & 6)**



Workshops at King George's Hall

- 28 to 31 August

Different days of arts and crafts with exciting visits, trips out and activities. Bookable by the day. Children may be split into age groups, 5 to 8's and 9 to 13's for specific activities. See pages **13 and 14** for details. **(Week 6)**

- Animal arty crafty day with a visit from ZooLab
- Safari golf adventure and arty-crafty day
- Arts and crafts and Shout! cooking day
- Movie and arty-crafty day

Please note: for Shout! courses to run there needs to be a minimum of 16 participants. Only confirmed bookings will be informed if a cancellation is necessary.

Free family play events

- **Shout! Out:** free play sessions for children and families. This is an open access service which means children are free to come and go as they please. Shout! staff come equipped with lots of play and sports resources, games, arts and crafts and ideas to keep you entertained. **Please note:** under 8's must be accompanied by an adult.

- **The Big Dig, Sow, and Grow at the Community Garden:** fun sessions where you can dig, plant and tend to vegetable in season.

No booking required. See pages **15 and 16** for details.



Sports and Arts Camp at Bell Farm - (5 to 13-year olds)

weeks 1 to 4 - 23 July to 17 August

An action-packed day of sports and arts with the chance to try out new activities every day and take part in coached sessions, such as golf, judo, street dance, fitness sessions, aerobics, cheerleading, and a multitude of different sports.

If you want to have fun, make new friends, and make sure you don't waste a single second being bored in the holidays, then our Sports and Arts Camp

is the place to be! With fresh and exciting activities and sports to do, whether you're feeling energetic or creative, there will always something new to try.

Join **Elmbridge Museum** to create your own **Saxon inspired jewellery** and find out about the Anglo-Saxons in Elmbridge and back by popular demand, the **honey bee and candle making workshop**.

Each week, there will be special visits from **Alive 'N' Kicking**, promoting healthy lifestyles, with opportunities to learn about healthy eating and nutrition, making healthy choices and fun, easy games and activity workshops.

Every Friday, weather allowing, we will have **water play**. We will be having a splashing time and chillout in the sunshine with water, balloons, buckets and squirters. Notice will be given at the end of the previous week when the forecast is available and consent form completed on the day. Don't forget to bring your swim costume/shorts, towel, sun cream, hat and change of clothes for the day. Children must be able to dress independently.

Please note: The Sports and Arts Camp is bookable by the day

Venue: Bell Farm School, Hersham Road, Walton-on-Thames, KT12 5NB

Age: 5 to 13 years

Time: 8.30am to 5.30pm Monday to Friday

Cost per day: With a more card £26.25, without a more card £31.50

Resident more card and concession £8.90

Learn to ride

Back by popular demand and exclusive to Sports and Arts Camp participants this summer

On Thursday 26 July, Friday 27 July, Thursday 16 August and Friday 17 August, your children will be able to participate in Learn to Ride, a playground-based course giving your child the opportunity to learn to ride their bike in small groups. The course runs for 2 hours during the day and is delivered by National Standard Cycle Instructors. We cannot guarantee that your child will be able to ride their bike after this training, but if they can't, they will have a really solid basis for further practice.

To book, email **shout@elmbridge.gov.uk** quoting Learn to Ride including your child's name and the date you require.

cont...



Please note:

1. There is no additional fee for this course, however, you must be booked onto Shout! Sports and Arts Camp for the day you wish to attend.
2. Spaces are limited, and bookings will close one week before the course date.
3. Bike must be in a mechanically safe condition. We strongly recommend that your child wear a helmet. You must be able to provide a lock to secure your child's bike whilst not in use during the day. Please adjust the saddle height so that your child can put both feet flat on the ground whilst seated and remove any stabilisers.
4. All bikes must be removed at the end of the day.

Shout! Extra! for Sports and Arts Camp - 23 July to 17 August

Activities that have been added to the daily programme but need to be booked separately. Children not booked on the full day can join these activities. Please note Shout! Extra must be booked in advance and incurs an additional fee. **(Weeks 1 to 4).**

Please note the closing dates for each Extra!

Our summer extras are:

- Join your friends at Ready Set Shout! for the Thursday afternoon swimming session at the Xcel leisure Complex. Please note the closing date for swimming booking is at 8.30am, one week prior to the event to allow for the organization of transport.
- Scooter workshops with Scootability™ - learn the basics, safety gear, balance, co-ordination, stopping, turning and road safety. For the more experienced, learning to 'bunny-hop', 180's and tail whips. All scooters and pads are provided.
- Join Hannah, the Countryside Learning Officer and Forest School qualified, in the natural outdoors for a hands-on practical experience. Hunt for bugs, make smores to eat, a woodland necklace and a natural wreath to take home.
- Be creative at the Ceramics Café. If you can paint you will love spending two hours at the Café painting pottery. Your creation will then be fired for you to collect it at a later date.

Dates	Closing date for booking at 8.30am on:	Activity	Age Group	Transport	Cost
Week 1 - 26/7/18	19/7/18	Swimming at Xcel Leisure Complex from 2pm to 3pm (bus leaves at 1.30pm and returns at 3.30pm)	8 to 13 years	Bus transfer	£5 per session
Week 2 - 2/8/18	26/7/18				
Week 3 - 9/8/18	2/8/18				
Week 4 - 16/8/18	9/8/18				
Week 2 - 1/8/18	30/7/18	Scotability™ - 1-hour morning session	5 to 13 years	Not applicable as on site	£12.50
Week 2 - 2/8/18	31/7/18	Forest School 2.45pm to 4.45pm	5 to 8 years	Not applicable as on site	£5 per session
Week 2 - 3/8/18	27/7/18	Ceramics Cafe	8 to 13 years	Walking bus (0.8 miles)	£15.00
Week 3 - 6/8/18	3/8/18	Forest School 1.15pm to 3.15pm	5 to 8 years	Not applicable as on site	£5 per session
Week 3 - 6/8/18	3/8/18	Forest School 2.45pm to 4.45pm	9 to 13 years	Not applicable as on site	£5 per session



Ready Set Shout! at Xcel - (5 to 13-year olds) weeks 1 to 4 - 23 July to 17 August

This is the ultimate fun-filled experience for children. Enjoy days packed with fun sports, aerobic sessions, games, team challenges and much more! Try new sports and games every day and get advice from professional coaches.

Have you been inspired to be an Olympian or Commonwealth Games athlete? Ready Set Shout! is the place to prepare for the games and have a go. There will be fun activities to get the heart racing, along with coach-led sessions including golf, rugby, tennis, karate, and swimming. You will also get involved in football, badminton, dodgeball, basketball tournaments and spend time on the Synthetic Turf Pitch. Throughout the week, teams will be awarded points for completing challenges and the course will close with a medals ceremony for all!

New to Ready Set Shout!: fitness classes, exercise aerobics, stretch and strength and street dance + special visits from Alive 'N' Kicking to learn about healthy lifestyles, eating and nutrition.

Fruit will be provided at break time. Please wear non-marking trainers, bring warm clothes and a waterproof jacket. Remember to bring a bottle of water.

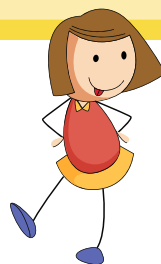
Please note: There are no arts and crafts available on this course

Venue: Elmbridge Xcel Leisure Complex, Waterside Drive,
Walton-on-Thames, KT12 2JG

Age: 5 to 13 years

Time: 8.30am to 5.30pm Monday to Friday Early drop off for your child(ren) from 8am, £5 extra (select as additional course when booking online).

Cost per day: With a more card £26.25. Without a more card £31.50
Resident more card and concession £8.90



Sports courses -

6 to 10 August and 13 to 17 August

Tuesday 7 August - Activity day at Walton Firs

Working with the team at Walton Firs we have put together a fantastic fun-packed outdoor adventure day. Start the day **buggy building** - the chance for your group to build its own set of wheels, have a go at **archery** under the guidance of an instructor. You will soon be able to masterfully hit the bullseye with skills and patience. Have fun with **photo orienteering** where you have to navigate your way around the course following picture clues.

Please dress for the weather (wet/hot/sunny), wet weather gear and boots or sun cream and hat and a bottle of water. Don't forget your picnic lunch.

Venue: Walton Firs Activity Centre, Convent Lane, Cobham, KT11 1HB

Age: 8 to 13 years

Time: 9am to 4.30pm

Cost: With a more card £30.00. Without a more card £36.00

Wednesday 8 & Friday 10 August, Wednesday 15 & Friday 17 August - Kayaking

Learn the skills to master your canoe under the expert coaching of an ex-world champion and double Olympian.

You must be able to swim for this activity. All equipment is provided; however, you will need waterproof clothes if raining, lightweight clothes to paddle in, a towel and spare clothes to put on afterwards.

Venue: Elmbridge Canoe Club, Walton Lane, Weybridge, KT13 8LY

Age: 9 to 13 years

Time: Morning sessions 9am to 12pm and afternoon sessions 1pm to 4pm

Cost per session: With a more card £30.00. Without a more card £36.00



Shout! Play Days at Xcel (5 to 13-year olds) weeks 5 & 6

Monday 20 to Friday 24 August & Tuesday 28 to Friday 31 August (4 - day week)

If you like sports, we have plenty of choices including Thursday swimming for ages 8 to 13 years. If arts and crafts are your thing we have masses to choose from, if playing games with your friends and our Play Workers is what you want to do, then this is the course for you. Just take your pick!

Venue: Elmbridge Xcel Leisure Complex, Waterside Drive, Walton-on-Thames, KT12 2JG

Age: 5 to 13 years

Time: 8.30am to 5.30pm

Cost per day: With a more card £26.25. Without a more card £31.50

Early start at Play Days at Xcel - 20 to 24 August and 28 to 31 August (4-day week)

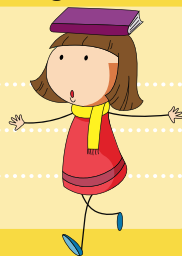
If you are a busy working parent, have a long commute or just need some extra time in the morning, why not add our fantastic Early Start to your booking? You can drop your children off from 8am. **This is an additional booking, please select as an additional course when booking online.**

Venue: Elmbridge Xcel Leisure Complex, Waterside Drive, Walton-on-Thames, KT12 2JG

Age: 5 to 13 years

Time: 8am to 8.30am daily

Cost per day: £5



Workshops at King George's Hall

(5 to 8-year olds and 9 to 13-year olds)

week 6 - 28 to 31 August

Tuesday 28 August - Animal arty-crafty day

Get ready for the most incredible day with a special visit from ZooLab. In the capable hands of the ZooLab's animal ranger you will get to meet amazing animals such as a giant African land snail, giant millipede, corn snake, stick insects, tarantula, tree frog and more! See how they move and find out what makes them so special. Then get creative with the Shout! play workers and make your own animals out of the bits and bobs from our craft cupboard. We've also got face painting so get ready to be totally **animal** when you go home.

Please note: Children are split into age groups, 5 to 8's and 9 to 13's to ensure they are offered age appropriate activities

Venue: King George's Hall, High Street, Esher, KT10 9RA

Age: 5 to 8 years and 9 to 13 years

Time: 9am to 5pm

Cost per day: With a more card £30.00. Without a more card £36.00

Wednesday 29 August - Arty-crafty and cooking day

Cooking and crafting doesn't get more fun than this! Come along for some food fun and put your skills to the test. Under the guidance of the Shout! playworkers, here's your chance to create your own pitta bread pizza to eat for lunch and bake your own biscuit to decorate for an afternoon snack. For the rest of the day, use your cooking inspired imagination to create arts and crafts to take home.

*Please advise of any dietary requirements by email to shout@elmbridge.gov.uk

Venue: King George's Hall, High Street, Esher, KT10 9RA

Age: 5 to 8 years and 9 to 13 years

Time: 9am to 5pm

Cost per day: With a more card £30.00. Without a more card £36.00

cont...

Thursday 30 August - Safari golf adventure and arty-crafty day

Hop aboard our minibus from King George's Hall and join us in an exciting Safari Adventure Golf adventure. A fun-packed, 18-hole learning experience which walks you through the deepest forests of South America, Africa and Asia with amazing discoveries at every hole. We'll then bus back where you can let your imagination run wild and create your own fantastic safari arts and crafts with our inspirational Play Workers. The choice is really yours.

Please note: Depending on numbers, we may split into 2 groups with one group golfing in the morning and the other in the afternoon

Venue: King George's Hall, High Street, Esher, KT10 9RA

Age: 5 to 13 years

Time: 9am to 5pm

Cost per day: With a more card £30.00. Without a more card £36.00

Friday 31 August - Movie and arty-crafty day

Take an action-packed trip to the Everyman Cinema in Esher to see the latest hit movie. Get involved in all the excitement, laughs and drama of the movies. After the movie, use your movie inspired imagination to create arts and crafts. Popcorn and drink included in price.

*Please advise of any dietary requirements by email to shout@elmbridge.gov.uk

Venue: King George's Hall, High Street, Esher, KT10 9RA

Age: 5 to 8 years and 9 to 13 years

Time: 9am to 5pm

Cost per day: With a more card £36.00. Without a more card £43.20



Free family play events

Wednesday 25 July - Hersham Teddy Bears Picnic

A day for all the family to play in the park with our Playworkers. Bring a picnic and enjoy the outdoors with games, sports and giant arts and crafts. Includes story telling time! This is a family event and children must be accompanied by an adult.

Venue: Vauxmead Field, Faulkners Road, Hersham, KT12 5JB

Age: Any age

Time: 11am to 2pm

Cost: Free

Wednesday 1 August
Elmbridge
celebrates...

**play
day** 2018



Spend a free family fun play day by the river with us celebrating Play Day 2018, the annual national celebration of children and young people's right to play. What will be happening?

- **Join in arts and crafts**
- **Energetic and active sports**
- **Dancing**
- **Bouncy Castle**
- **Painting**
- **and many more fun**

Venue: At the Play Boats, behind East Molesey Cricket Club, Hurst Park, East Molesey (nearest postcode KT8 9AL)

Age: Any

Time: 11am to 3pm

Cost: Free

No need to book, just turn up with your family and play!



This is a family event and children should be accompanied by an adult.
For further information, call **01372 474634** or visit **elmbridge.gov.uk/shout**

SHOUT! OUT – free play sessions - Thursday 9 August and Tuesday 14 August

No charge and no booking required

Free sessions for children and families where children can play freely outdoors. All children are welcome to join the free sessions held at two different locations in the borough. Bring a picnic and enjoy the outdoors with games, sports and arts and crafts.

Shout! Staff come equipped with lots of **play** and sports resources, games, arts and crafts and ideas to keep you entertained. You can use the **outdoor gym** equipment and we will have access to the **tennis** courts (for designated times).

Why don't you **stay and play**, bring a picnic and enjoy the outdoors playing games and sports, creating arts and crafts and much more.

Please note: Under 8's must be accompanied by an adult. This is not a childcare service. Please see elmbridge.gov.uk/shout for the Shout! Out information leaflet and registration form for the over 8's coming on their own.

Thursday 9 August - Cobham Recreation Ground, Lushington Drive, Road, Cobham, KT11 2LN (Getting to Cobham Recreation Ground? Have a look at chatterbus.org.uk where you can travel to Oakdene Road stop for just £1 then short walk to Cobham Recreation ground).

and

Thursday 14 August - Molesey Hurst Recreation Ground, Dunstall Way, East Molesey KT8 1PD

Age: All ages to 13 years, under 8's must be accompanied by an adult

Time: 10.30am to 1pm

Important notice: In the event of inclement weather, such as pouring rain, it may be necessary to cancel an event. If this should happen, we will put a notice on our Facebook page and display a notice at the venue where Shout! Out was planned.

The Big Dig, Sow and Grow at the Community Garden

Dig and water to your heart's content and over the summer you can watch things grow. Come and join the community garden volunteers to help dig, hoe, plant, tend, weed and water - there's plenty to do and it's fun and energetic. You can make cress caterpillars to take home and search for bugs. An adult must accompany all children.

Dates: Thursday 26 July, 9 August and 23 August 1pm to 1.50pm

Venue: Cobham Community Garden, Cobham KT11 3DG (pay and display parking available in Holly Hedge Road car park). The garden can be found by crossing the road and heading for the allotments where you will see the community garden banner to guide your way

Age: 2 years plus

Cost: Free

Tennis for summer 2018

Book direct with Elmbridge Borough Council tennis partners

Children will be developing their hand eye coordination skills through fun tennis related activities and games.

For ages 3 to 5 years, this is a fun introduction to the game and no experience is necessary.

For children ages 5 to 8 years, the course is designed to offer fun, informal, developmental tennis in a friendly environment. No tennis experience is necessary.



For details of tennis sessions near you please visit
elmbridge.gov.uk/parkstennis



Useful information

How do I book my course?

Book online at elmbridge.gov.uk/shout

How do I pay for my course(s)?

All payments must be made at the time of booking to secure a place.

Debit/credit card - the online booking system gives you the option to pay by card at the time of booking. If your payment is unsuccessful, please email shout@elmbridge.gov.uk or call **01372 474634** to confirm your booking.

Childcare vouchers - if you pay by childcare vouchers, the course must be booked more than 4 working days before the course starts. If payment is not received within 7 days your booking will be cancelled.

If you wish to pay with a combination of card and childcare vouchers - please book your courses as two separate bookings as we cannot take part payment for courses by voucher.

If your child has **additional needs** - please tick the box when booking online and the Play Development Officer will call you to discuss how we can support your child at Shout!

When you receive your **booking confirmation** via email, please remember to print and sign your child's medical consent form and bring it along on the first day of activities.

Shout Extra! Bookings close a week before the event to organise transport. Extra! Activities require a consent form which will be sent to you before the event and must be handed to the site leader before the event.

If you have not found the information you are looking for in the brochure, please email shout@elmbridge.gov.uk or call **01372 474634**.

Shout! procedures

To view our policies and procedures and safeguarding children information at elmbridge.gov.uk/shout or contact shout@elmbridge.gov.uk or call **01372 474544**

more card (Borough wide leisure discount card)

The **more** card gives you exclusive booking times and discounts on Shout! Holiday Activities as well as many other benefits. Your child(ren) must have a valid **more** card at the time of booking. To apply for a **more** card for your child(ren), visit elmbridge.gov.uk/more or call the Xcel Leisure Complex on 01932 260300.

If you are entitled to any of the concessions listed in the Parent's Information and Welcome Pack, you must show proof of this when collecting your child(ren)'s **more card**. **You must allow 10 days for your more card to be processed.**

A **Parents Information** and **Welcome Pack** and our **Terms and Conditions** are available to download at elmbridge.gov.uk/shout

Course confirmation

Please note to the start and finish times of the courses you have booked. This information can also be seen in your online account under 'my bookings'. Once we have received your payment, we will send you confirmation and a medical and consent form by email. We advise you to check both documents thoroughly.

What children need to bring

Lunch, snacks, and a refillable water bottle. Please note there are no fridge facilities on any site. Children should dress appropriately for the courses they are attending. Depending on the activities, we recommend sensible clothes, trainers, a hat, sun cream and waterproofs. For outdoor courses, children should wear long trousers and clothes that you do not mind getting dirty. A spare change of clothes would be useful but is not essential.

For children using medication, please ensure that any medicine is suitably labeled and packed.



Limited places available, advanced booking essential

To view our safeguarding children policy, visit elmbridge.gov.uk/shout
Please ensure your child has a valid more card before making a booking.



Shout! Holiday Activities

To view our policies and procedures please visit elmbridge.gov.uk/shout

